

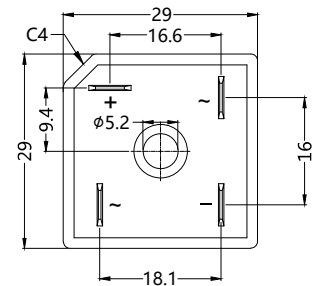
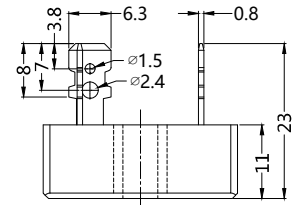
# S1PDB1502 thru S1PDB1518

## Single Phase Bridge Rectifiers

### Dimensions in mm



	V <sub>RRM</sub> V	V <sub>DC</sub> V	V <sub>RWS</sub> V
S1PDB1502	200	200	140
S1PDB1504	400	400	280
S1PDB1506	600	600	420
S1PDB1508	800	800	560
S1PDB1510	1000	1000	700
S1PDB1512	1200	1200	840
S1PDB1516	1600	1600	1120
S1PDB1518	1800	1800	1260



Symbol	Characteristics	Maximum Ratings	Unit
I <sub>AV</sub>	Maximum Average Forward Rectified Current @T <sub>c</sub> =70°C (With Heatsink)	15.0	A
I <sub>FSM</sub>	Peak Forward Surge Current 8.3ms Single Half-Sine-Wave Superimposed On Rated Load (JEDEC METHOD)	300	A
V <sub>F</sub>	Maximum Forward Voltage At 7.5A DC	1.1	V
I <sub>R</sub>	Maximum DC Reverse Current At Rated DC Blocking Voltage	@T <sub>J</sub> =25°C 5.0 @T <sub>J</sub> =125°C 500	uA
I <sup>2</sup> t	I <sup>2</sup> t Rating For Fusing (t < 8.3 ms), (Note 2)	508	A <sup>2</sup> S
C <sub>J</sub>	Typical Junction Capacitance Per Element (Note 1)	110	pF
R <sub>θJC</sub>	Typical Thermal Resistance (Note 3)	1.4	°C/W
T <sub>J</sub>	Operating Temperature Range	-55 to +150	°C
T <sub>stg</sub>	Storage Temperature Range	-55 to +150	°C

NOTES: 1. Measured At 1.0MHz And Applied Reverse Voltage Of 4.0V DC.  
2. Measured At Non-repetitive, For Greater Than 1ms And Less Than 8.3ms.  
3. Device Mounted On 300mm x 300mm x 1.6mm Cu Plate Heatsink.

### FEATURES

- \* Rating to 1800V PRV
- \* High efficiency
- \* Glass passivated chip junction
- \* Electrically isolated metal case for maximum heat dissipation
- \* File E310749

### MECHANICAL DATA

- \* Case: Molded plastic with Heatsink internally mounted in the bridge encapsulation
- \* Polarity: As marked on Body
- \* Mounting: Hole for # 10 screw
- \* Weight: 18 grams

**Sirectifier®**

# S1PDB1502 thru S1PDB1518

## Single Phase Bridge Rectifiers

